

Being an international researcher

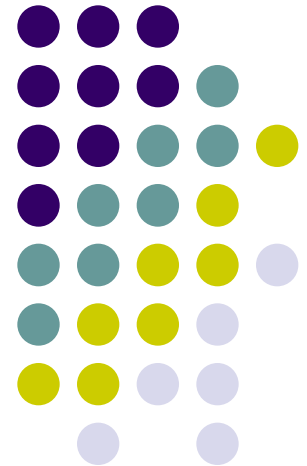
Setting up a researchers' mobility center

Ralitza Soultanova

Researchers' mobility center

Université libre de Bruxelles

ralitza.soultanova@ulb.ac.be



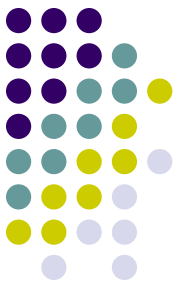


- An egocentric introduction
- Université libre de Bruxelles – researchers' mobility center



Childhood context

- Born mid 70 in Sofia
- Sedentarity was the norm in Bulgaria



A mobile childhood



- Parents researchers

nuclear physics and
biophysics

PhD Dubna and Moscou

Research career at CERN –
Geneva



0-24 :

- 17 different apartments
- 12 schools



My research

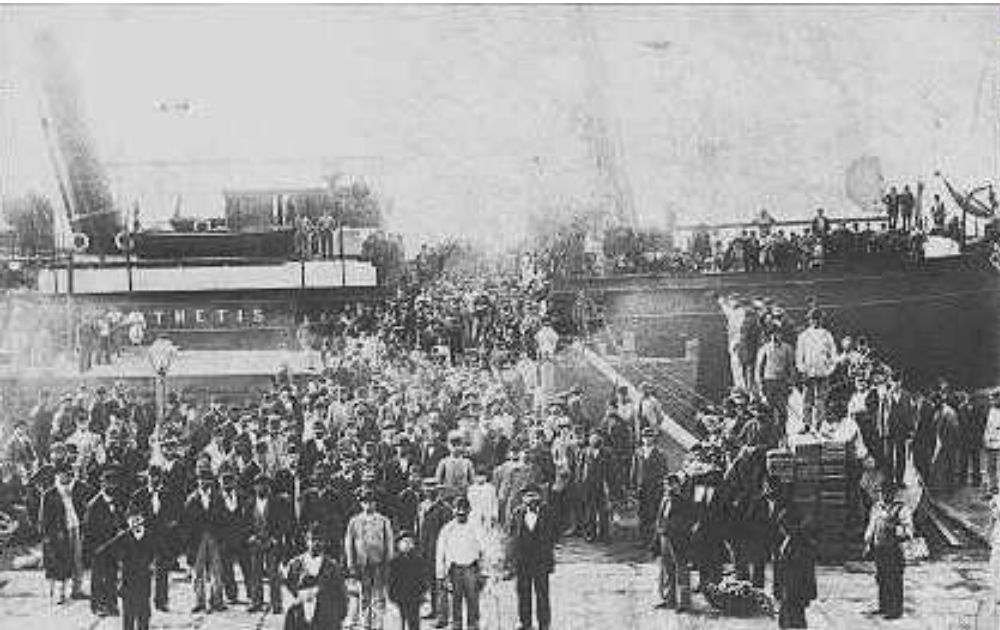


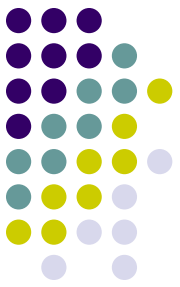
- Doctoral school Bucharest
- DEA –ULB
- PhD researcher at ULB ...
Migration

- Always migrated in a
secure context : job,
housing, parents

- How do other migrants
deal?

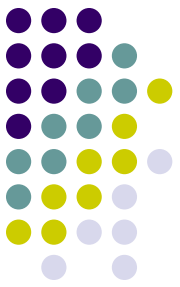
- Research on social links
and networks during
migration





Post research

- 2007 quitted research
- 2007-2010
R&D ULB - in charge of social sciences and communication
- January 2011 –
In charge of the researchers' mobility center -
International relations



Some mobility issues I had

- Romania
never get an ID card (illegal residence),
no health cover, no insurances

But good luck!

- Brussels
3 months for a visa
Unhealthy apartment
Social service 1h30 ... Sorry we can't help you

But lucky again ...

No institutional support but met nice persons - housing, enrowlment, health care,
school

Met helpfull locals, did not had language issues, small but regular felowship



Lessons learned from my mobility experience ?



Very simple things may be awfully difficult!

Awfully difficult issues may be very simple if
you meet the right person and get the right
information!

Université libre de Bruxelles



- Comprehensive university
human and social sciences,
live sciences and medicine,
exact and applied sciences

- 24 000 students
- 1 800 PhD students
- 1/3 international - students, researchers, staff

- 3 400 - Teaching and research staff



ULB Researchers' mobility center



- What ?

Services in the Euraxess areas - practical aspects of mobility

Visa and work permit

Housing

Residents permit

- Who ?

All researchers international mobility – PhD, post docs, professors, BA MA Erasmus Mundus Program

January-June 2011 – 100 researchers



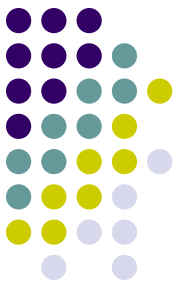
Some challenges

- Entry conditions
multiple status a PhD student,
duration of stay, change of status
- Social rights portability
- Funding - not enough, delays, lack of flexibility,
diploma recognition
- Get the best, compete with north America

Internal challenges



- Convince colleagues that it's important to help international researchers
- Single entry point
- Information circulation



Next steps

- New researcher's mobility guide, guide for supervisors, check lists
- Do beyond administrative issues - social events
Welcome to Brussels event - June 21 st
Connections between international researchers + local researchers
- Data base development - ask the questions only once
- Needs evaluation => action plan
 - Researchers' needs
 - Staff needs



Thank you!

Ralitza.soultanova@ulb.ac.be